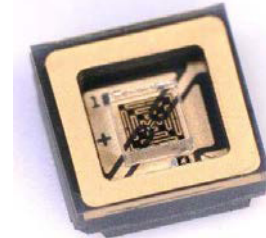
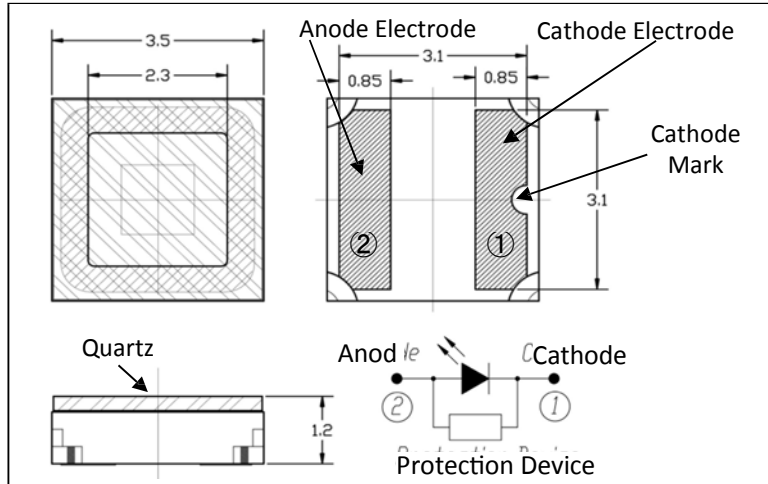


MODEL xFxXA-0F001 series

3.5x3.5mm SMD Flat Top Type

Mechanical Specifications and Materials (Unit:mm)



Product ID

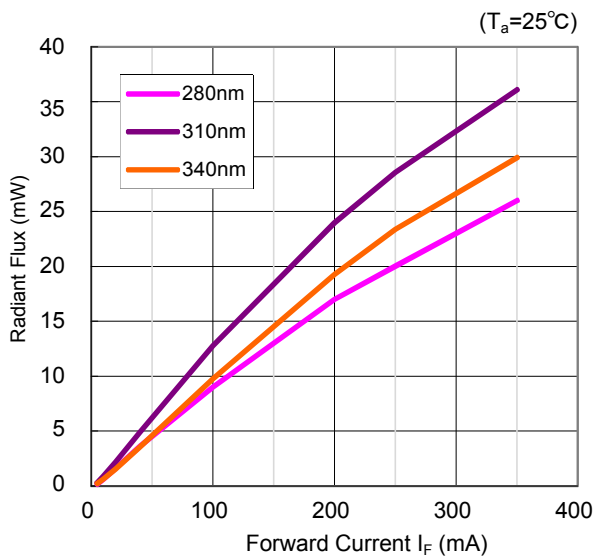
280nm: DF8XA-0F001

310nm: UF1XA-0F001

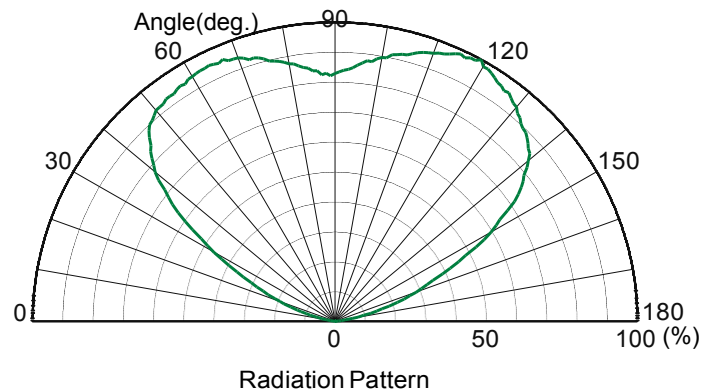
340nm: UF4XA-0F001

Typical Electro-Optical Characteristics [IF=350mA, Ta=25°C]											
Item	Symbol	Unit	DF8XA			UF1XA			UF4XA		
			Min	Typ	Max	Min	Typ	Max	Min	Typ	Max
Peak Wavelength	λ_P	nm	270	280	290	295	310	315	335	340	345
Radiant Flux	P_o	mW		26			36			30	
Full Width at Half Maximum	$\Delta\lambda$	nm		12			13			9	
Forward Voltage	VF	V		5.8			5.0			4.6	
Viewing Half Angle	$\theta_{1/2}$	deg		120			120			120	

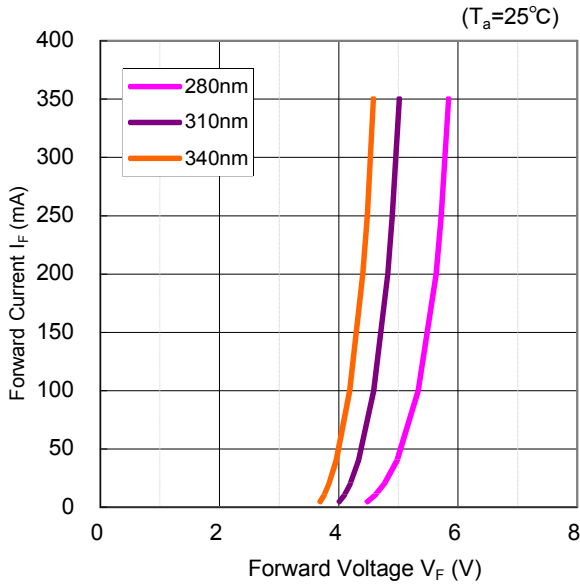
Forward Current vs Radiant Flux



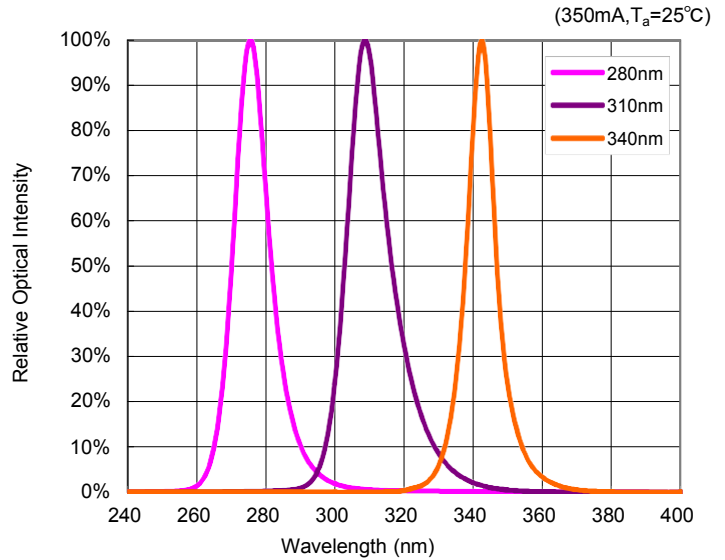
Radiation Pattern



Forward Current vs Forward Voltage



Spectrum



Issued March 2016. SPEC information (included design, dimension, and typical data) would be changed without prior notice.

Lead (Pb) Free Product – RoHS Compliant

	CAUTION
	<ul style="list-style-type: none"> - LEDs emit very strong UV radiation. - Don't look directly into the LED light. UV radiation can harm your eyes. - To prevent even inadequate exposure, wear protective eyewear. - If LEDs are embedded in devices, please indicate warning labels against the UV light LED used. - Keep out of reach of children. - Specification and dimension are subject to change for improvement without notice.