

Tentative

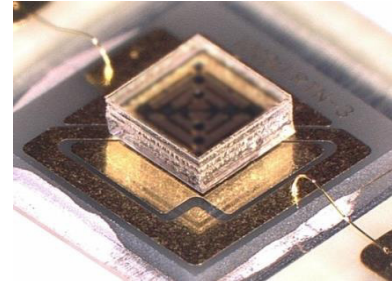
MODEL UF1X series

310nm Naked Bare Die (Flip chip form)

For High Power Applications

Available Format

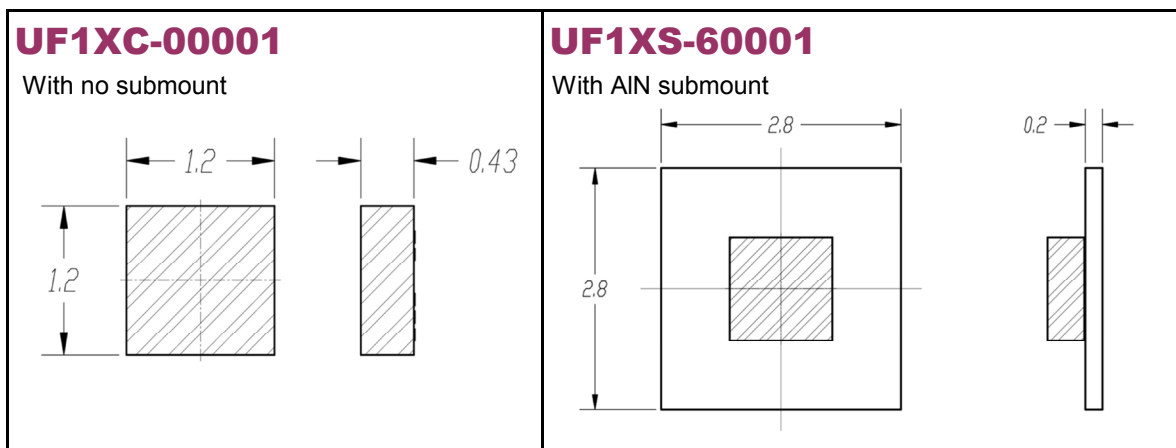
- 3535 SMD package
- Bare die on AlN submount
- Naked Bare die
(Au stud ball bumping process recommendable)



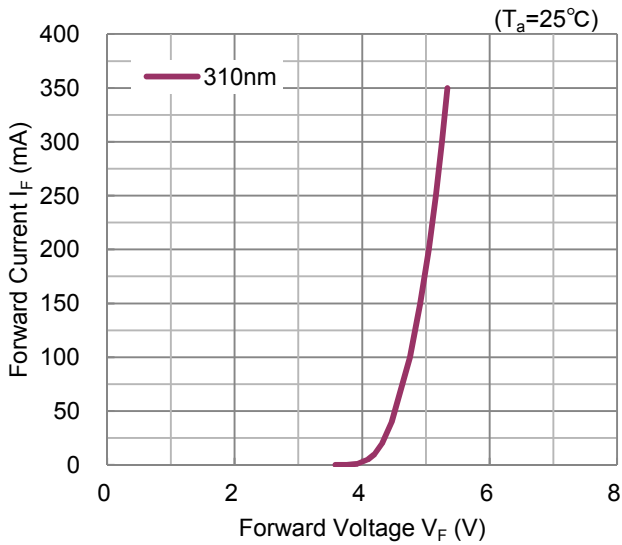
View of "Die on AlN Submount"

Typical Electro-Optical Characteristics [IF=350mA, Ta=25°C]					
Item	Symbol	Unit	UF1X		
			Min	Typ	Max
Peak Wavelength	λ_P	Nm	305	310	315
Radiant Flux	P_o	mW		35	
Full Width at Half Maximum	$\Delta\lambda$	Nm		14	
Forward Voltage	VF	V		6	
Viewing Half Angle	$\theta_{1/2}$	deg		143	

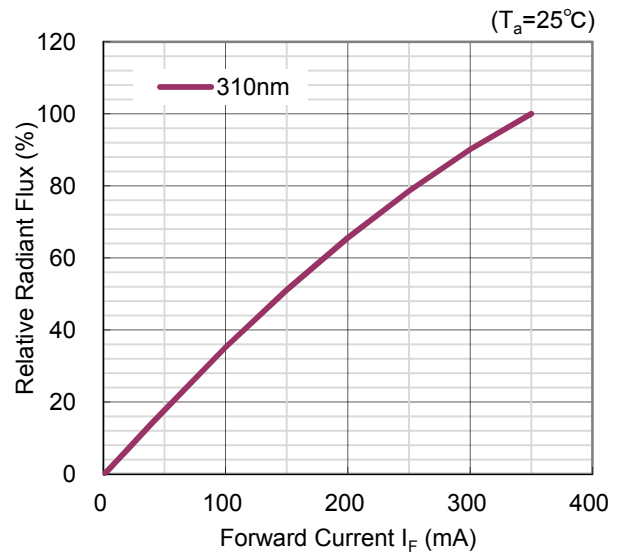
Product ID and physical dimensions (Unit: mm)



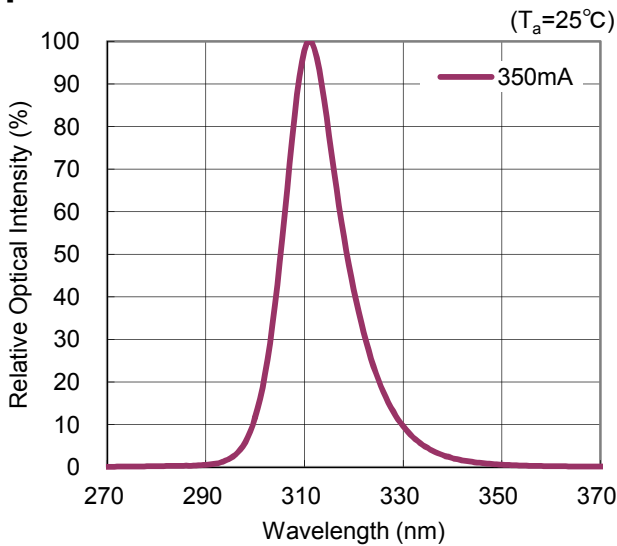
Forward Current vs Forward Voltage



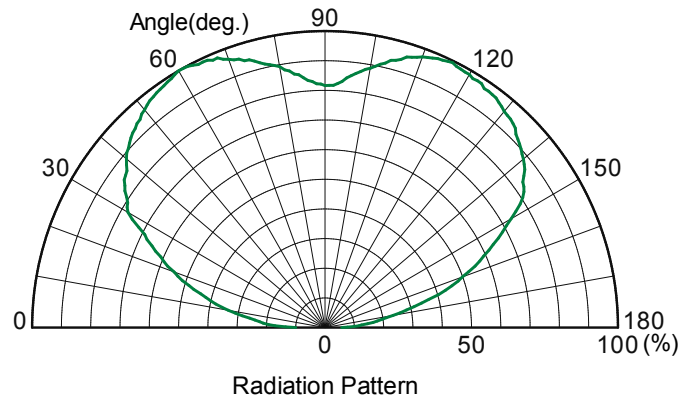
Forward Current vs Radiant Flux



Spectrum




Radiation Pattern



Issued April 2016. SPEC information (included design, dimension, and typical data) would be changed without prior notice.

Lead (Pb) Free Product – RoHS Compliant

	⚠ CAUTION
<ul style="list-style-type: none"> • LEDs emit very strong UV radiation. • Don't look directly into the LED light. UV radiation can harm your eyes. • To prevent even inadequate exposure, wear protective eyewear. • If LEDs are embedded in devices, please indicate warning labels against the UV light LED used. • Keep out of reach of children. • Specification and dimension are subject to change for improvement without notice. 	