

L760D-66-16100
Infrared Illuminator

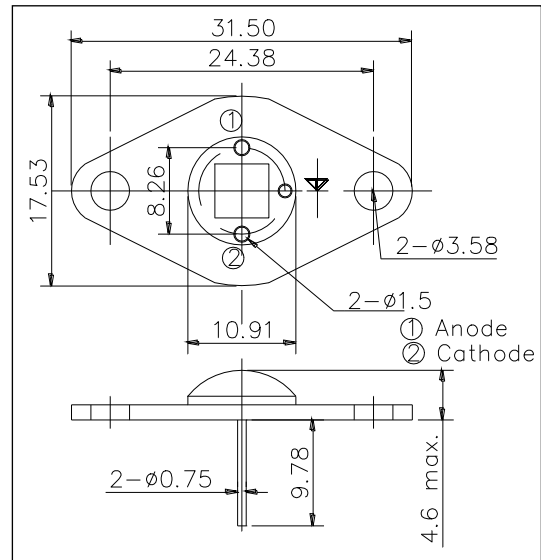
<Specification>

- Chip Material: AlGaInP
- Chip Dimension: 1000um x 1000um
- Number of Chips: 16pcs
- Peak wavelength: 760nm Typ.
- Stem: TO-66 Stem
- Lens: Silicone and/or Epoxy Resin

<Application>

- Biometrics System
- Electronic Toll Collection
- Infrared Illumination for Cameras
- Machine Vision System

Outer Dimension (Unit:mm)



| Absolute Maximum Ratings[Tc=25°C] | | | |
|-----------------------------------|--------|---------------------|------|
| Item | Symbol | Maximum Rated Value | Unit |
| Power Dissipation | PD | 32 | W |
| Forward Current | IF | 3.2 | A |
| Reverse Voltage | VR | 20 | V |
| Thermal Resistance | Rthja | 2 | K/W |
| Junction Temperature | Tj | 120 | °C |
| Operating Temperature | TOPR | -40 ~ +85 | °C |
| Storage Temperature | TSTG | -40 ~ +100 | °C |
| Soldering Temperature** | TSOL | 265 | °C |

* Soldering condition must be completed within 3 second at 265 °C.

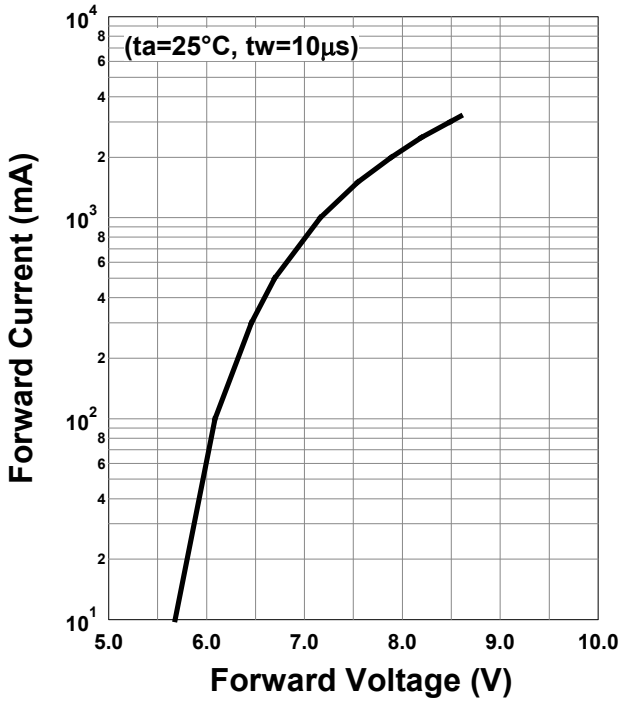
| Electro-Optical Characteristics [Tc=25°C] | | | | | | |
|---|--------|-----------|---------|---------|---------|------|
| Item | Symbol | Condition | Minimum | Typical | Maximum | Unit |
| Forward Voltage | VF | IF=3.2A | | 8.6 | 10 | W |
| Total Radiated Power* | PO | IF=3.2A | | 5700 | | mW |
| Peak Wavelength | λP | IF=3.2A | 750 | | 770 | nm |
| Half Width | Δλ | IF=3.2A | | 26 | | nm |
| Viewing Half | θ1/2 | IF=100mA | | ±64 | | deg |
| Rise Time | tr | IF=3.2A | | 30 | | ns |
| Fall Time | tf | IF=3.2A | | 20 | | ns |

* Measured by S3584-08

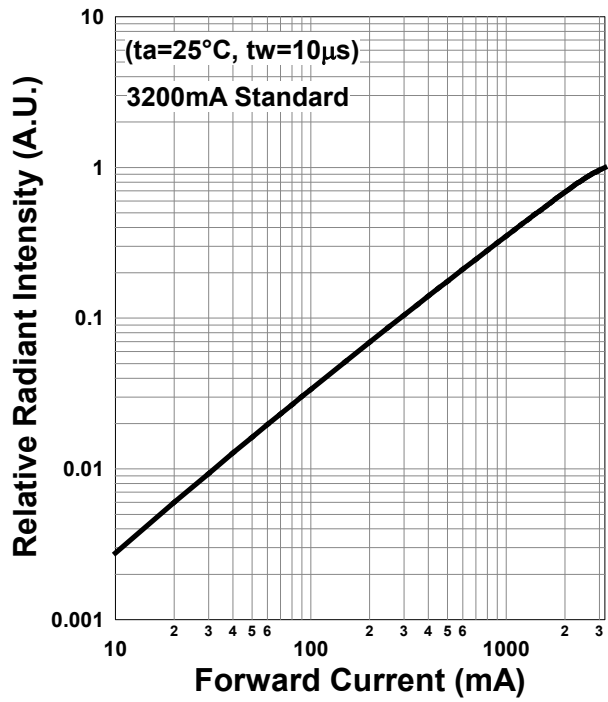


Typical Characteristic Curves

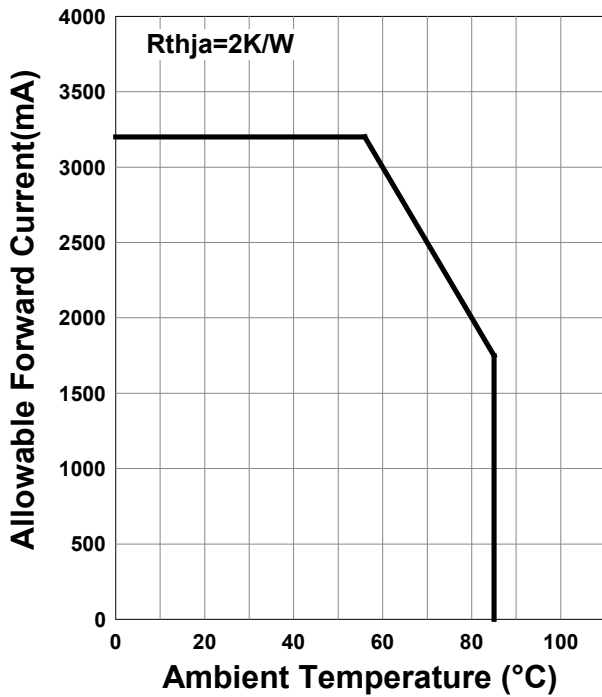
Forward Current - Forward Voltage



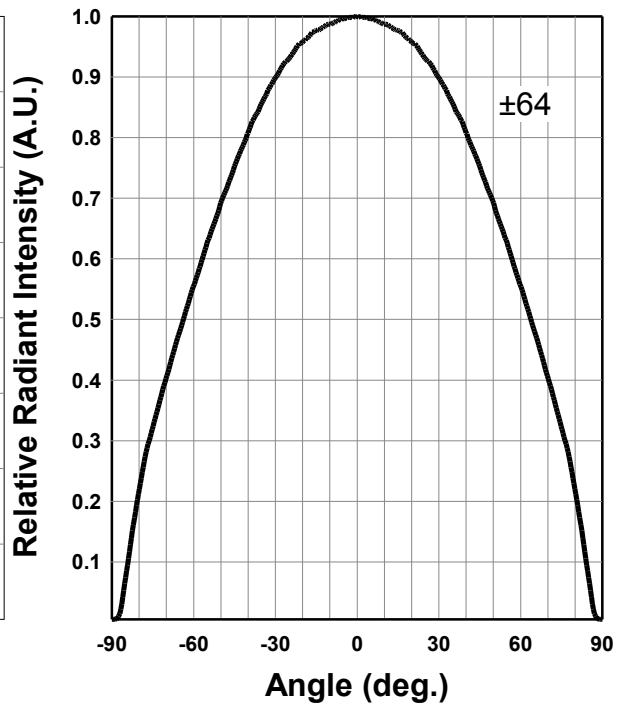
Relative Radiant Intensity - Forward Current

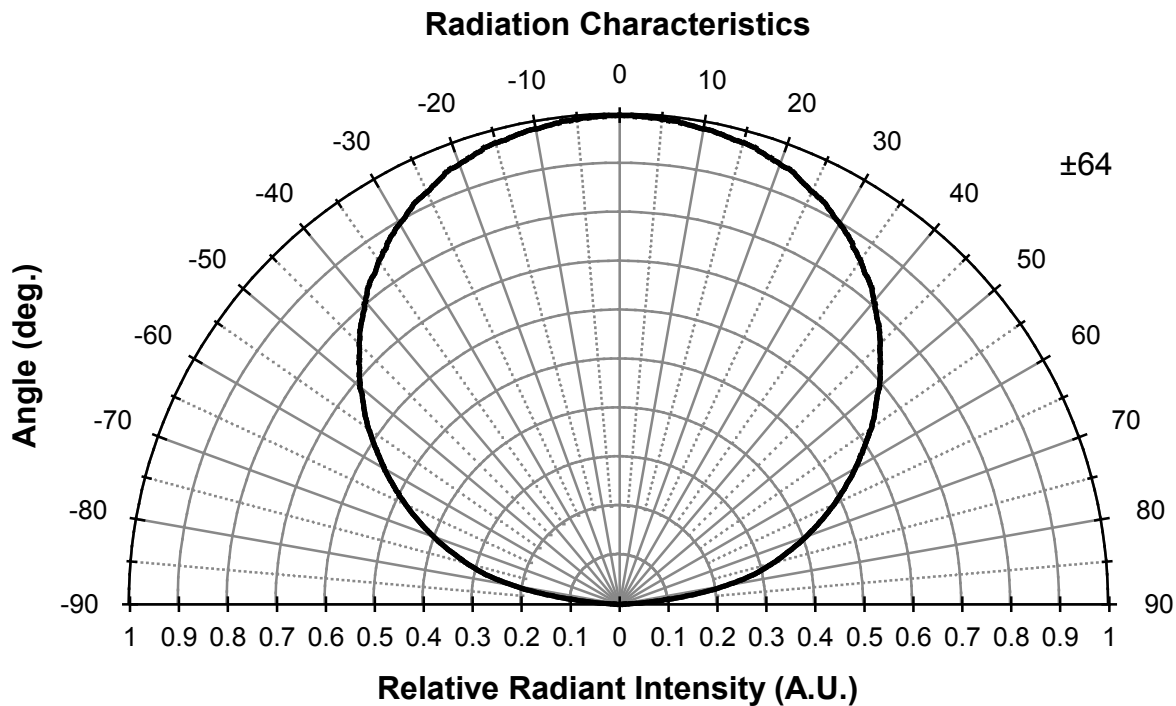


Allowable Forward Current - Ambient Temperature

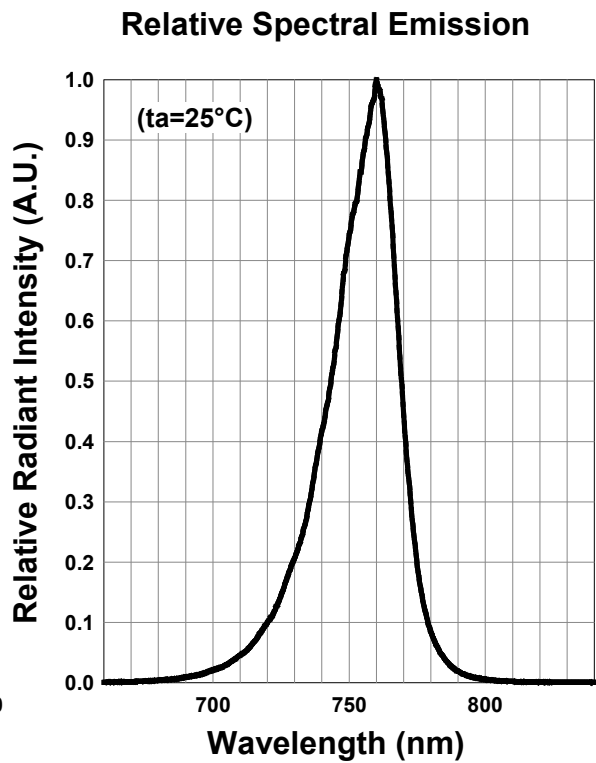
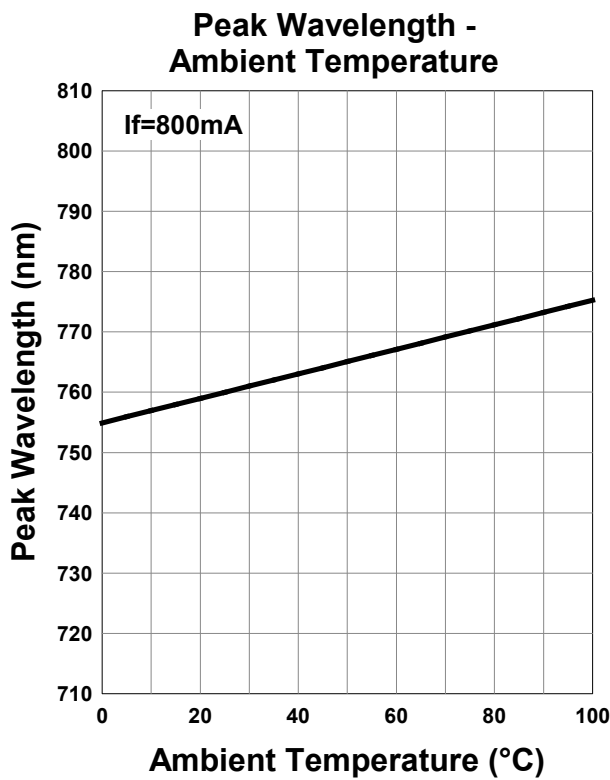
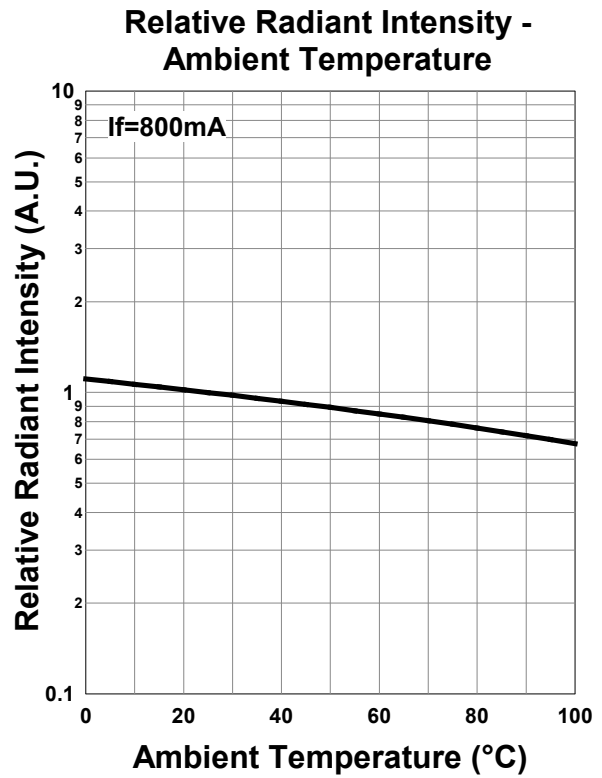
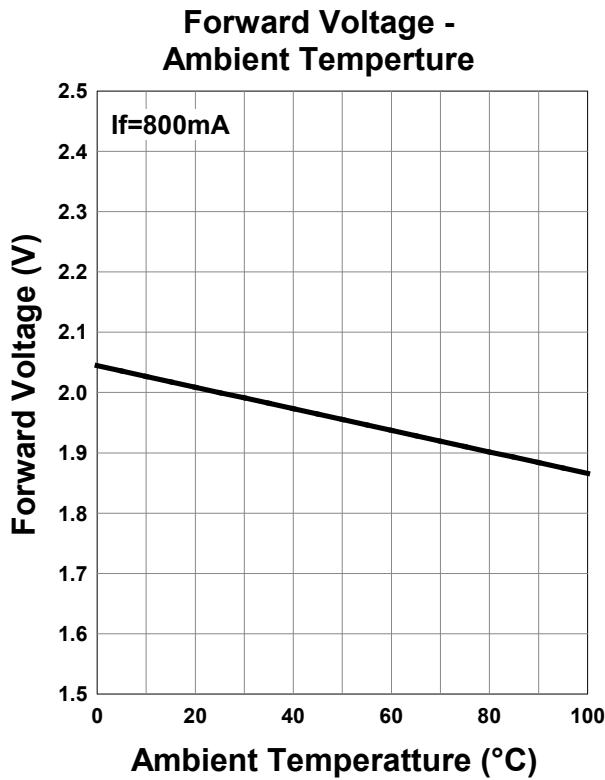


Radiation Characteristics





*The data below shows the characteristics of one representative TO-66 chip.



Disclaimer

Product specifications and data shown in this product catalog are subject to change without notice for the purposes of improving product performance, reliability, design, or otherwise.

Product data and parameters in this catalog are typical values based on reasonably up-to-date measurements.

Product data and parameters may vary by user application and over time.

Products shown in this catalog are intended to be used for general electronic equipment. Products are not guaranteed for applications where product malfunction or failure may cause personal injury or death, including but not limited to life-supporting / saving devices, medical devices, safety devices, airplanes, aerospace equipment, automobiles, traffic control systems, and nuclear reactor control systems.

2016.07