

L635/760-04A Bi-Color LED for medical analysis

Bi-color LED of L635/760-04A consists of DDH structure AlGaAs LEDs mounted on a lead frame with a clear epoxy lens.

On forward bias it emits a band of visible light, which peaks 635nm and 760nm at anode common.

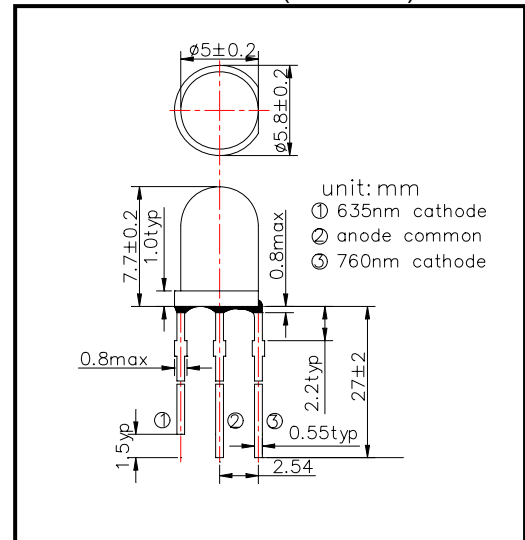
◆ Features

- 1) High Reliability
- 2) High Power
- 3) Anode Common

◆ Specifications

- 1) Product Name Bi-color LED
- 2) Type No. L635/760-04A
- 3) Chip
 - (1) Chip Material AlGaAs (DDH structure)
 - (2) Peak Wavelength 635nm and 760nm typ.
- 4) Package
 - (1) Type Φ 5mm clear molding
 - (2) Resin Material Epoxy Resin
 - (3) Lead Frame Soldered

◆ Outer dimension (Unit: mm)



◆ Absolute Maximum Ratings

| Item | Symbol | Maximum Rated Value | | Unit | Ambient Temperature |
|-----------------------|--------|---------------------|-------|------|---------------------|
| | | 635nm | 760nm | | |
| Power Dissipation | PD | 100 | 200 | mW | Ta=25°C |
| Forward Current | IF | 50 | 100 | mA | Ta=25°C |
| Reverse Voltage | IR | 5 | | V | Ta=25°C |
| Operating Temperature | TOPR | -30 ~ +85 | | °C | |
| Storage Temperature | TSTG | -30 ~ +100 | | °C | |
| Soldering Temperature | TSOL | 260 | | °C | |

‡Soldering condition: Soldering condition must be completed within 3 seconds at 260°C

◆ Electro-Optical Characteristics [Ta=25°C]

| Item | Symbol | Condition | Minimum | | Typical | | Maximum | | Unit |
|----------------------|-----------------|-----------|---------|-------|---------|-------|---------|-------|------|
| | | | 635nm | 760nm | 635nm | 760nm | 635nm | 760nm | |
| Forward Voltage | VF | IF=20mA | | | 2.10 | 1.65 | 2.30 | 2.00 | V |
| Reverse Current | IR | VR=5V | | | | | 10 | | uA |
| Total Radiated Power | PO | IF=20mA | 0.7 | 2.0 | 1.5 | 4.0 | 2.5 | 8.0 | mW |
| Peak Wavelength | λ_P | IF=20mA | 630 | 750 | 635 | 760 | 640 | 770 | nm |
| Half Width | $\Delta\lambda$ | IF=20mA | | | 20 | 30 | | | nm |
| Viewing Half Angle | $\theta_{1/2}$ | IF=20mA | | | ±20 | | | | deg. |

‡Total Radiated Power is measured by Photodyne #500

‡Radiant Intensity is measured by Tektronix J-6512

Marubeni America Corporation

3945 Freedom Circle, Suite 1000, Santa Clara, CA 95054

408-330-0650 (Ext. 323), 408-330-0655 (Fax), sales@tech-led.com