

# L525/660-31 Bi-Color LED as Anode Common

Bi-color LED of L525/660-31 consists of InGaN(525nm) and AlGaInP(660nm) LED mounted on a lead frame with a clear epoxy lens as anode common. On forward bias it emits a band of visible light, which peaks 525nm and 660nm.

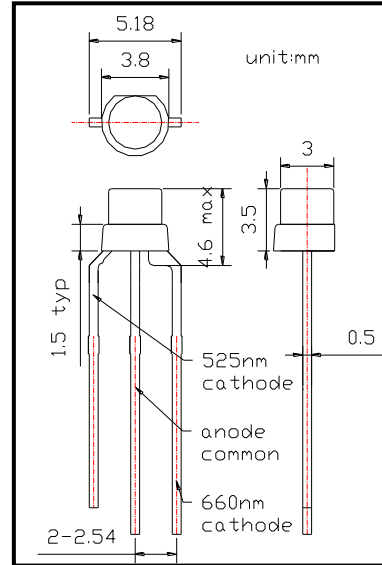
◆Outer dimension (Unit: mm)

◆Features

- 1) High Reliability
- 2) High Power

◆Specifications

- 1) Product Name Bi-color LED
- 2) Type No. L525/660-31
- 3) Chip
  - (1) Chip Material InGaN(525nm), AlGaInP(660nm)
  - (2) Peak Wavelength 525nm and 660nm typ.
- 4) Package
  - (1) Type  $\Phi$ 3mm clear molding
  - (2) Resin Material Epoxy Resin
  - (3) Lead Frame Lead Free



◆Absolute Maximum Ratings

Item	Symbol	Maximum Rated Value		Unit	Ambient Temperature
		525nm	660nm		
Power Dissipation	PD	180	120	mW	Ta=25°C
Forward Current	IF	50		mA	Ta=25°C
Reverse Voltage	IR	5		V	Ta=25°C
Operating Temperature	TOPR	-30 ~ +85		°C	
Storage Temperature	TSTG	-40 ~ +100		°C	
Soldering Temperature	TSOL	265		°C	

‡Soldering condition: Soldering condition must be completed within 5 seconds at 265°C

◆Electro-Optical Characteristics [Ta=25°C]

Item	Symbol	Condition	Minimum		Typical		Maximum		Unit
			525nm	660nm	525nm	660nm	525nm	660nm	
Forward Voltage	VF	IF=20mA			3.1	2.1	4.0	2.5	V
Reverse Current	IR	VR=5V					10		uA
Total Radiated Power	PO	IF=20mA	5.0	8.0	8.0	12.0			mW
Peak Wavelength	$\lambda_P$	IF=20mA	515	650	525	660	535	670	nm
Half Width	$\Delta\lambda$	IF=20mA			35	15			nm
Viewing Half Angle	$\theta_{1/2}$	IF=20mA			$\pm 65$				deg.

‡Radiated Power is measured by S3584-08.